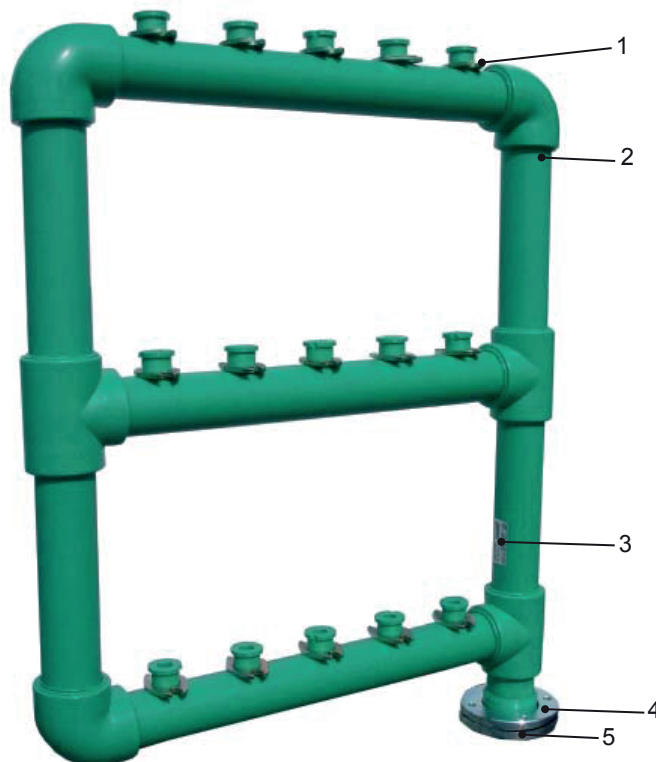


Application: Centralisation of the individual meters for hot or cold fresh water in the dwelling buildings.

Ref.	Ø	Nº of billets	2 Rows	3 Rows
BH003	63	4	•	
		6	•	•
	75	8	•	
		9		•
		10	•	
		12	•	•
		14	•	
		15		•
		16	•	
		18	•	•
		20	•	
		21		•
		22	•	
		24	•	•
		26	•	
		27		•
		28	•	
		30	•	•
	90	33		•
		36		•
		39		•
		42		•
		45		•

Ref. BH003



Gatell Baterías *sa*

Bank for the centralisation of the individual hot or cold fresh water meters

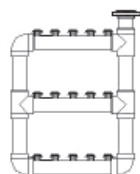
Made of polypropylene tube (PP-R) apt to drinking water installations AENOR product certificate No. 001/003 768 of 19/07/2006.

- Random copolymer polypropylene circuit completely non-toxic. No water communicates any color, taste or smell.
- No chemical or electrolytic corrosion.
- High resistance to all types of water (pH range 1-14).
- Total absence of incrustations due to the quality of the internal walls of the tube and the lack of chemical affinity precipitate causing incrustations.
- Frost resistance due to the typical elasticity of the material of the pipe section increases absorbing liquid volume increase.
- Very low pressure drops due to its perfectly smooth surface design.
- The elasticity of the material of the circuit prevents the propagation of noise and vibration and provides greater absorption of water hammer.
- Material with a long life of uninterrupted use.
- Conforms to Technical Building Code approved in RD 314/2006 of 17 March.

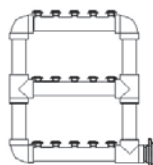
Specifications:

1. Orientable billet.
2. Circuit according polypropylene tube UNE-EN ISO 15874-1:2004 y UNE-EN ISO 15874-2:2004.
3. Name badge.
4. Steel flange F-111 in accordance with DIN 2573.
5. **Steel Counter-flange** de acero F-111 in accordance with DIN 2573.
 - Seal made of EPDM.
 - Nuts and bolts in accordance with EN-10204-1.1.

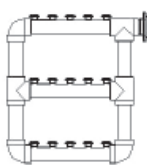
- Dimensions of meter bank accordance with UNE 19900-1: 2005. Meter
- Bank lightweight, easy handling and installation.
- Low thermal conductivity decreases markedly in the circuit surface condensation.
- Each meter bank is unitarily identified. Supplied with hooks, counterflange connection to the feeding tube, gasket and screws.
- The bank entry is normally located on one side in a lower vertical layout, although the entry can be located in the following layouts on order:



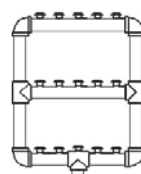
Upper
Ref. BH003S



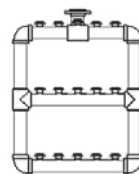
Lower side
Ref. BH003L



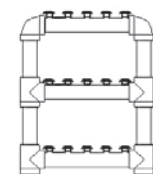
Upper side
Ref. BH003LS



Lower central
Ref. BH003C



Upper central
Ref. BH003CS



Double entry
Ref. BH003D

Special banks (Ref. BH003E) With prior consultation, the distances between billets and rows can be adapted to the space availability at the installation site;

Accessories:

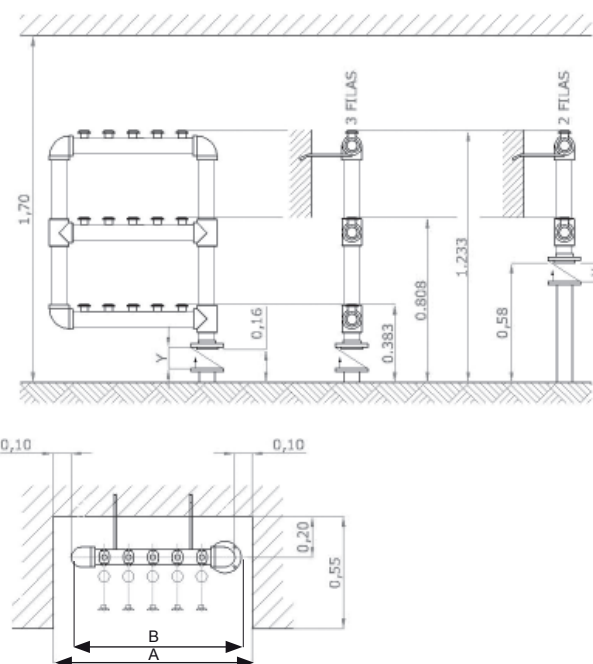
- Clasification board: Ref. BH006
- Bank hook PPR: Ref. BH047
- Blind flange: Ref. BH007
- Bana flange: Ref. BH010
- Ship flange: Ref. BH011
- Standard expansion pipe: Ref. BH030
- Check valve: Ref. BH012
- Male/female Flexo: Ref. BH014

Spare parts:

	Ref.
DIN 2573 Flange	BH009
Seal for brida DIN 2573	BH019

	Ref.
Bank hook PPR	BH047
Flange bolt 2" y 1/2"	BH031
Flange bolt 3" 14x70	BH048

Ref.	Ø	Number of billets	Rows	A (m)	B (m)	Y(*) (m)	Weight Kg.
BH003	63	4	2	0,61	0,45	0,084	7,0
		6	2	0,73	0,57		7,6
		8	3	0,61	0,45		9,2
		10	2	0,90	0,74		10,5
		12	3	0,78	0,62		13,2
		14	2	1,02	0,86		11,2
	75	16	2	1,14	0,98	0,090	11,9
		18	3	0,90	0,74		14,3
		20	2	1,26	1,10		12,6
		22	3	1,02	0,86		15,3
		24	2	1,38	1,22		13,3
		26	2	1,50	1,34		14,0
		28	3	1,14	0,98		16,4
		30	2	1,62	1,46		14,7
		32	3	1,26	1,10		17,5
		34	2	1,74	1,58		15,4
		36	2	1,86	1,70		16,1
		38	3	1,38	1,22		18,5
		40	2	1,98	1,82		16,8
		42	3	1,50	1,34		19,6
		44	2	2,10	1,94		17,5
	90	46	2	2,22	2,06	0,105	18,3
		48	3	1,62	1,46		19,4
		50	3	1,76	1,61		30,1
		52	3	1,88	1,73		31,5
		54	3	2,00	1,85		32,8
		56	3	2,12	1,97		34,2
		58	3	2,24	2,09		35,5



Gatell sa
Baterias

(*) Y = Planned space between flanges for check valve Ref. BH012 (not supplied with Ref. BH003 and its variants)